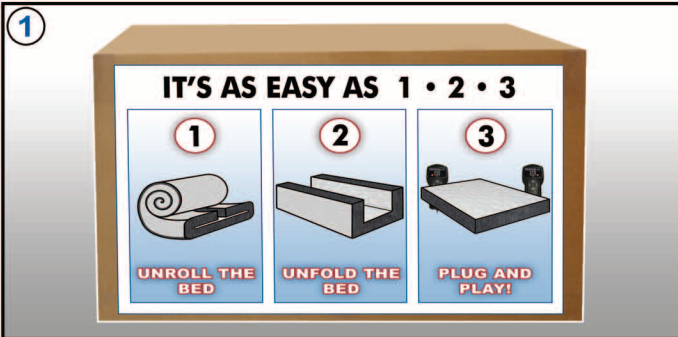


# DIGITAL AIR

# ROLLED & READY

SET-UP INSTRUCTIONS FOR FREEDOM-AIR™  
& DIGITAL-AIR 2.0™ SLEEP SYSTEMS



Today we will be showing the ease of setting up your new Rolled & Ready bed. Your complete bed is in this box. Simple, Convenient and Easy To Install.



This roll pictured above is an Eastern King mattress, no extra assembly required. This roll contains your air chambers, bolsters, anatomic layer & the Freedom-Air pump at the foot of the bed.



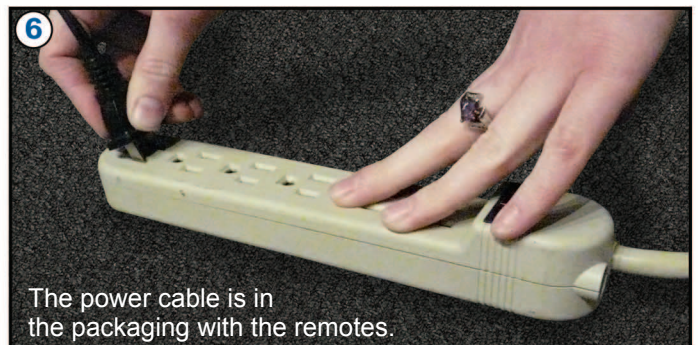
Use the tool attached, to cut the plastic & access the mattress. Place the mattress on the foundation with the law tag on top so it rolls toward the head of the bed when the bag is opened.



Once the plastic is removed, set it aside to discard later. Unroll the mattress, align the head of the bed, and sides to where the mattress will be placed.



After your bed is unwrapped - you will want to allow the bed to decompress. This can take approximately 30 minutes to 1 hour. Like bread, the bolsters will need to rise.



The power cable is in the packaging with the remotes.

Once plugged into a surge protector (not provided), your remote will come to life. The remote has an LED display with lights designating Right and Left sides.



To learn more about FREEDOM-AIR SQ & DIGITAL-AIR 2.0, visit: <https://innomax.com/product-assembly-instructions/> and click on Air Inflators & Chambers Assembly Instructions.



Congratulations! You have now set-up your new bed. The only thing left is to put on your sheets, and go take a well deserved nap. Enjoy!



# DIGITAL AIR

## SETUP INSTRUCTIONS FOR FREEDOM-AIR

FOR THE BEST REST OF YOUR LIFE

1. Carefully remove Air Bed components from cartons. Avoid use of knives and box cutters. Bed is assembled from bottom up.

2. If using foundation, setup foundation on frame or bed legs.

Note: If applicable, it is not necessary to unzip the factory installed Zippered Comfort Layer Insert Enclosure, which zips to the inside zipper in the Top Cover, unless you have a mattress model with a reversible Insert and would like to access.

3. Unzip only the Bottom & Sides Dish, which zips to the outside zipper in the Top Cover, and place on Foundation or Platform Bed Deck and insert Interlocking Bolsters. Insert Top to Bottom Foam Rail A Bolsters first. Port Hole in Head to Foot Bolsters should be positioned at head of bed for threading Control Cords in to Pump and Power Cord out to power supply. Side to Side Bolsters B are then inserted to form a foam frame inside the dish. If upside down or not completely unfolded Bolsters will not reach head to foot or side to side. Bolsters may bow until Air Chamber(s) are filled. Match HEAD RAIL A & SIDE RAIL B labels for proper setup.

4. Place the Freedom-Air Inflator Pump into Foam Cut-Out in the Foot Bolster with Power Cord exiting Pump on right side when standing at foot of bed. Thread Power Cord out Port Hole at head of Mattress. Then thread Control Cords from outside bed into Port at the head of the bed and connect to the receptacles under the Air Pump.

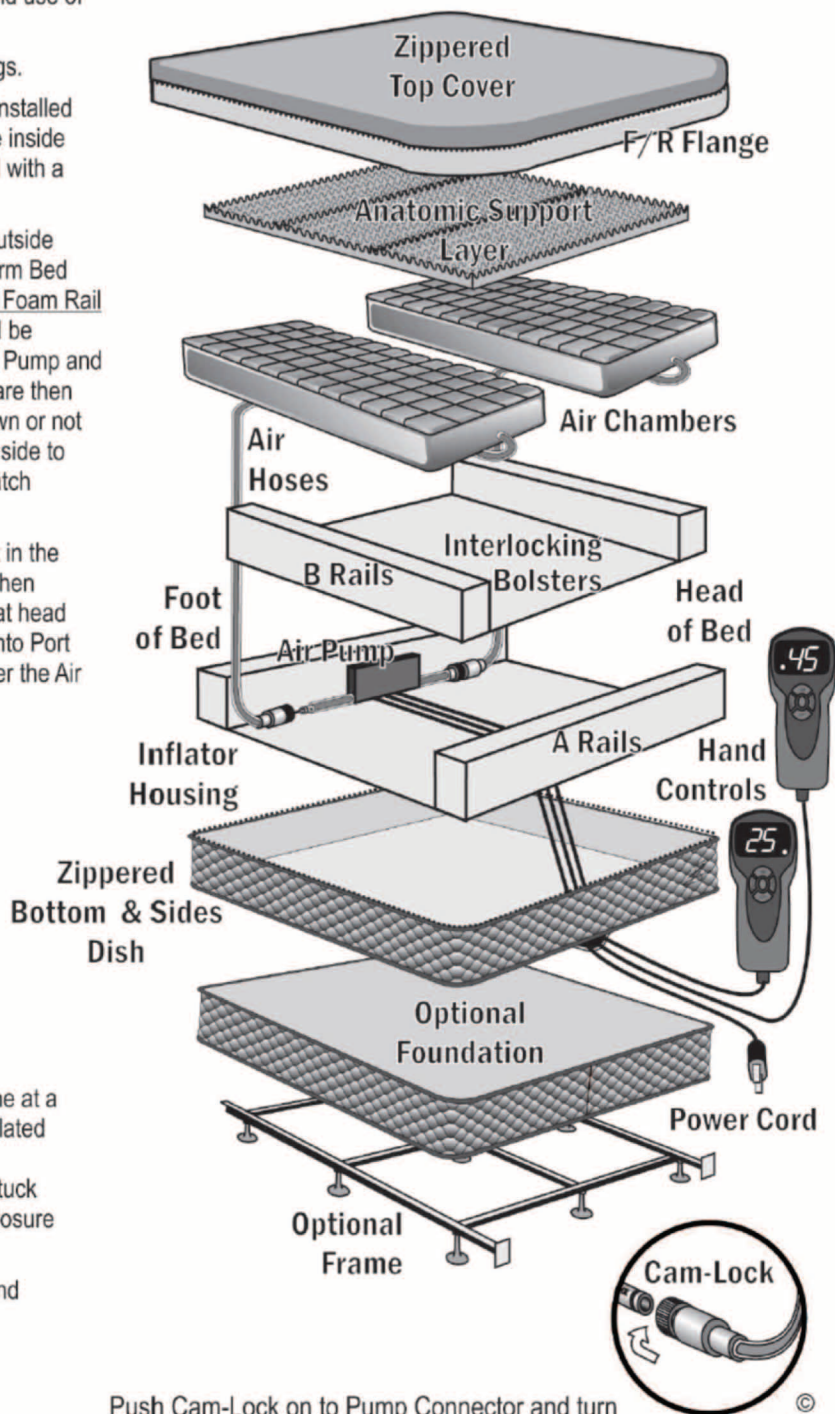
5. Lay unfolded Air Chambers inside the dish with the Air Hoses exiting at bottom then thread Hoses below Air Chambers and connect the to the Freedom-Air Pump by pushing Hose barrel connectors onto Pump connectors to engage Swivel Collar and twist clockwise until Cam-Lock clicks securely into place.

Note: Optional single Chamber models utilize only one Control and Cam-Lock connector which is then only attached to one of the Pump air outlet Connectors.

6. Plug pump into surge protector and then into power supply, locate the hand controls and inflate the air cores one at a time. Only one side of Dual systems may be inflated or deflated at a time. Fill the Air Chambers until  $\frac{3}{4}$  inflated. Insert the Anatomic Support Layer evenly over top of Air Chambers, tuck F/R Flange behind zipper on Bottom Dish, the zip Top Enclosure closed and fill Air Chambers.

7. Adjust Digital Control to your preferred comfort setting and enjoy the ultimate in adjustable sleep.

### Freedom-Air™ Assembly



**DIGITAL AIR SERVICE**  
530 W. Elk Pl. Denver, CO 80216  
720-241-0648

Push Cam-Lock on to Pump Connector and turn swivel collar clockwise to lock & counter clockwise to unlock. You will feel Cam-Lock click into place once locked.