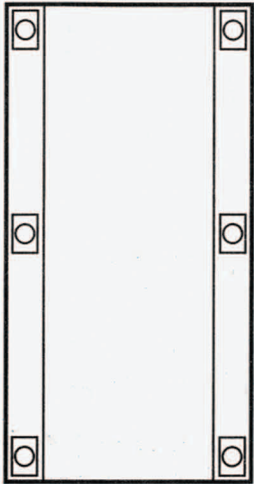


Installation instructions for baseplate and Bedleg placement

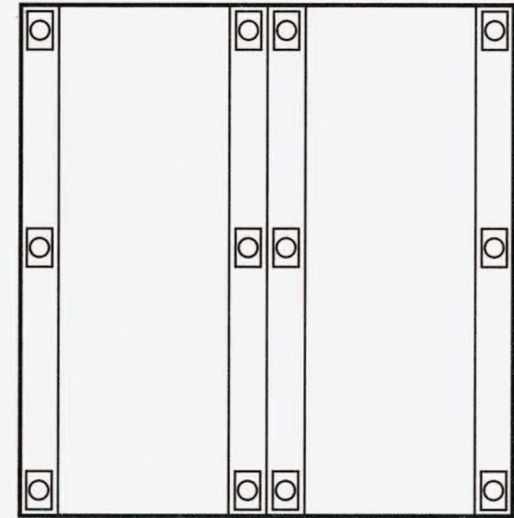
Leg Placement of 3", 5", 7" & 10" Bedlegs



Twin



Full/Full XL/Queen



Split Queen/King

A full XL, using 3", 5", 7" and 10" Bedlegs, uses the same configuration as King size, using three (3) Bedlegs attached to the center rail for proper installation.

To view the assembly video for this product please visit the videos page on www.innomax.com

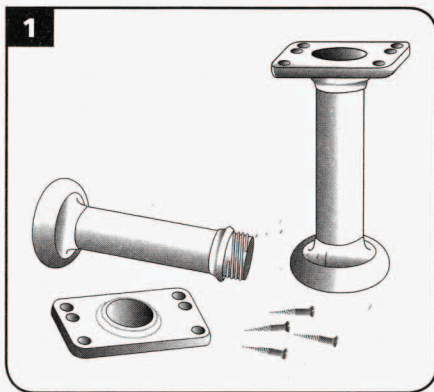


1-800-INNOMAX

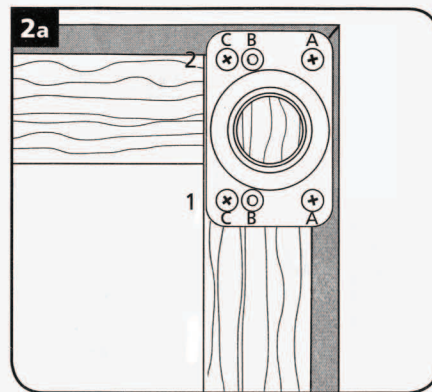


Bedleg and Bracket Installation Instructions

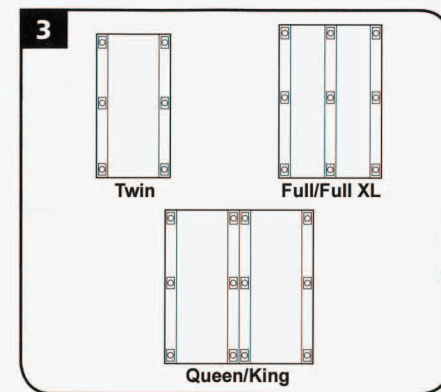
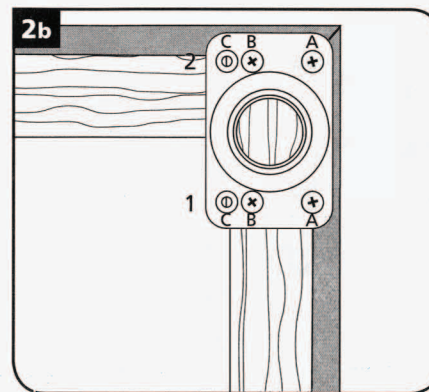
To view the assembly video for this product please visit the videos page on www.innomax.com



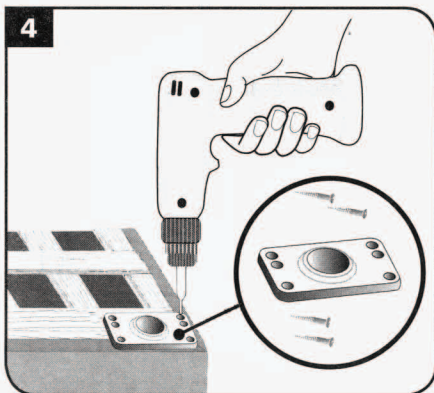
IMPORTANT: Verify that your side rails meet the minimum requirements of a width of no less than 2 1/4". We recommend the box spring side and center rails be of high quality kiln dried wood of 1" x 4" (actual size of 3/4" x 3 1/4").



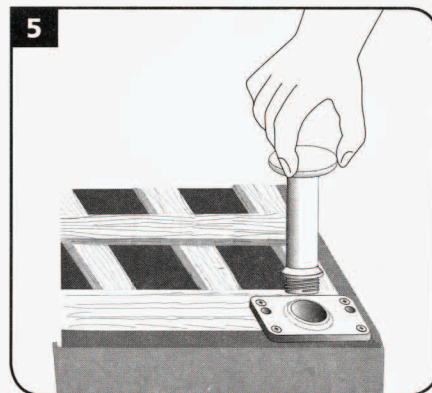
Before drilling, pick the set of screw holes you will use by measuring the width of your box-spring rail. If your rails are an actual width of 3/4" x 3 1/4", use the outside holes [C]. The side with the single set of holes [A] always faces the outside edge of the bedframe. If your rails are less than an actual width of 3/4" x 3 1/4", use the inside set of screw holes [B]. Always use the outside screw holes [A].



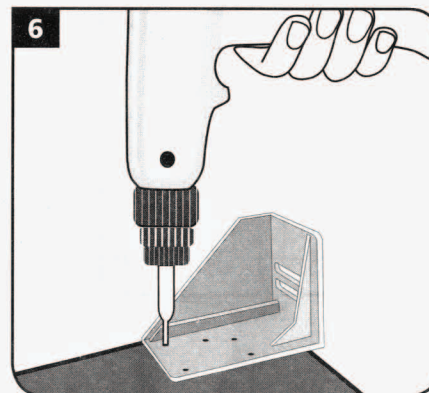
Using the above diagram, determine the number and placement of the Bedlegs for your bed size.



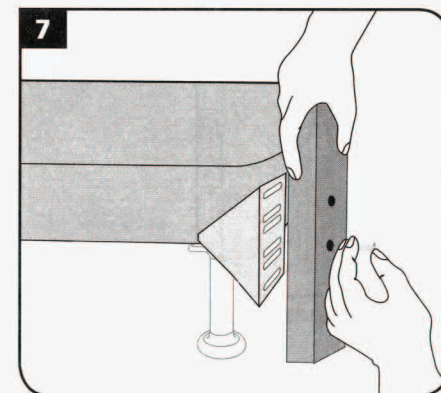
Using a power screwdriver, mount the plate to the boxspring using the supplied hardware. **Use only 4 screws per plate.**



Hand twist the threaded leg stem into the base plate.



Bedlegs headboard brackets easily attach to most headboards. Using a power screwdriver, install the headboard bracket with the supplied hardware directly to the boxspring. **Use only 4 screws per plate.**



To complete installation, simply bolt the headboard onto the bracket. **Screws are not provided to attach the headboard bracket to the headboard.**

INNOMAX
America's Finest Sleep Products Since 1976

VERSALEG
THE MODERN, SAFE, AFFORDABLE METAL BEDFRAME ALTERNATIVE

1-800-INNOMAX