

THE DURAMAX™ FOUNDATION

INNOMAX
America's Finest Sleep Products®

www.innomax.com

▶ STURDY | STRONG | EASY TO ASSEMBLE | NO TOOLS REQUIRED - DESIGN

COMPONENTS

2 people required for assembly

 PROUD TO BE MADE IN USA

ASSEMBLY INSTRUCTIONS



8 Wingnuts



8 Washers



Cover (2 Pieces/Zip Together)



Slats: C/King: 20 • King/Queen: 18
Twin-XL: 18 • Twin/Full: 16



2 End Rails



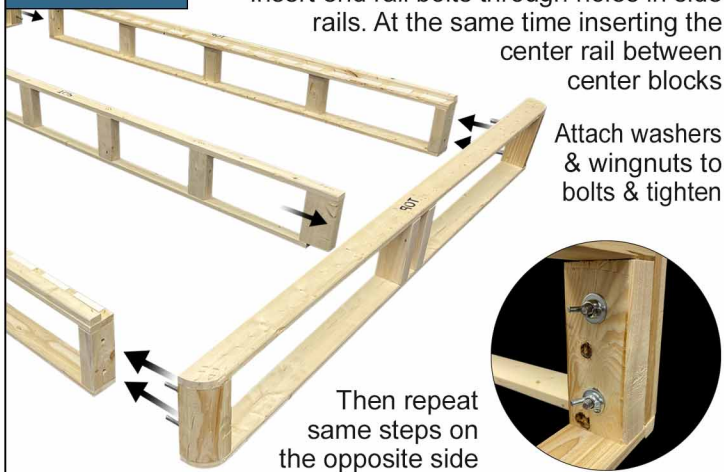
1 Center Support Rail



2 Side Rails

STEP 1

Insert end rail bolts through holes in side rails. At the same time inserting the center rail between center blocks



Attach washers & wingnuts to bolts & tighten

Then repeat same steps on the opposite side

STEP 2

There is Velcro located on the bottom side of each slat, also sectioned out on the side rails



Peel off the Velcro protection tape and place slats onto Velcro on side rails

Press firmly so the slat sticks in place

STEP 3

Pull top cover over foundation

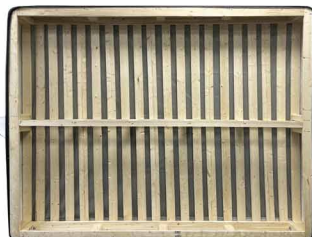


Then pull the cover down and over each side

Stand up foundation.

Locate the zipper.

Zip the bottom cover on.



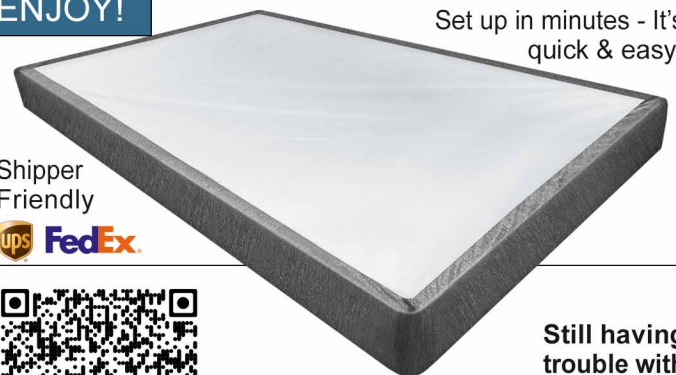
ENJOY!

Set up in minutes - It's quick & easy!

Shipper Friendly



Assembly Video



Still having trouble with assembly?

No problem, scan the code on the left for our assembly video