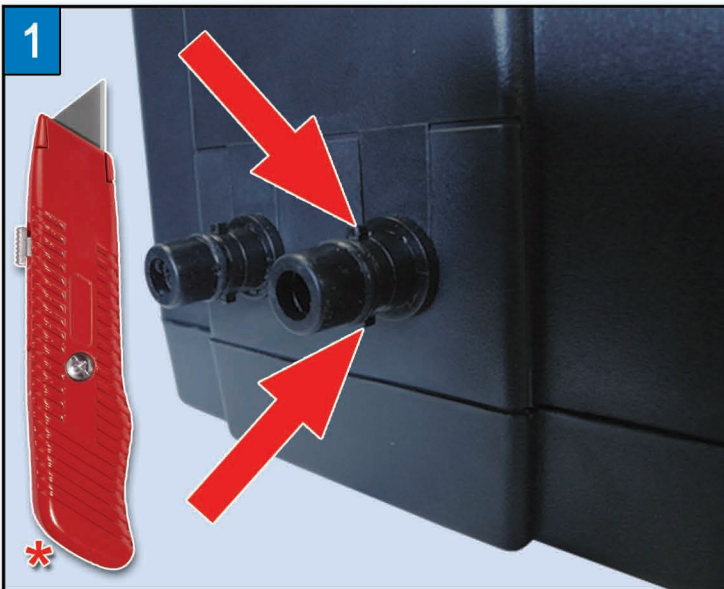


PUMP PORT REPLACEMENT ADAPTOR INSTRUCTIONS FOR CAM-LOCK CONNECTION

Steps To Fix Your InnoMax Pump Port Fitting With The New Adaptor



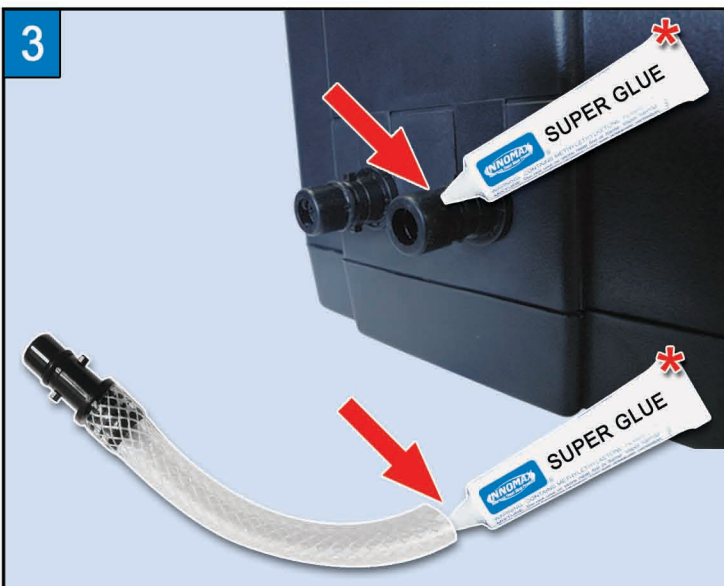
The first step in the process is to cut the top and bottom lock nipple making sure the port is as smooth as possible. Next remove the rubber ring washer from the pump port.

*Caution: When Using Sharp Objects, Use Them At Your Own Risk



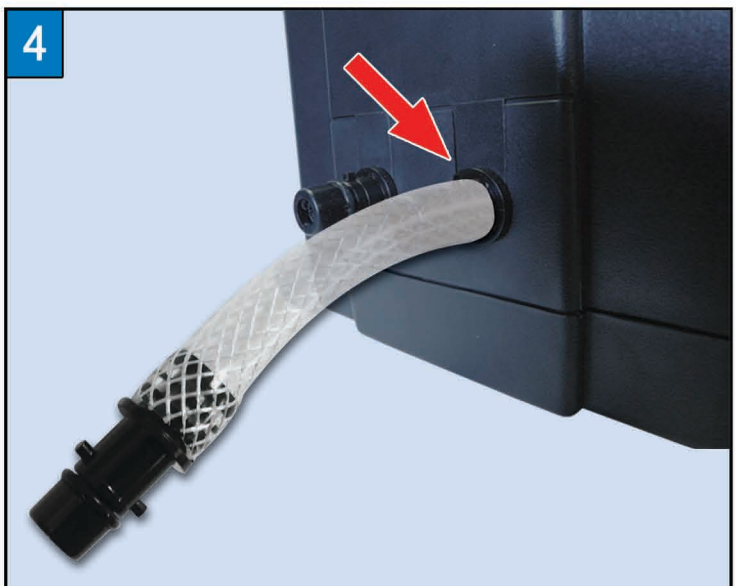
Heat a cup of water to dip the end of the hose in to help stretch the hose around the existing pump port. Quickly dry the hose off to apply the super glue.

*Caution: When Heating Water Do Not Over Heat To Scalding Temperatures



Apply the super glue adhesive to the inside open end of the hose adaptor & also to the outside of the pump port. Next slide the open end of the hose over the port on the pump.

*Caution: Super Glue Can Be Dangerous If Not Used For Intended Purposes



Let the new hose fitting dry for 4 hours to ensure that the glue has solidified. Lastly, reconnect the Cam-Lock fitting to the new adaptor on your air inflator making sure to turn the Cam-Lock until it clicks and locks into place.