

owners manual

2015 edition

■ ENGLISH



brío 30



brío 60



flat / sleep



head only



feet only



zero-gravity

CONTENTS

Advisory.....	3
Acoustics.....	5
Installation	6
brío 30 Remote Control Function	10
brío 60 Remote Control Function	11
brío 60 Remote Control Programming.....	12
Troubleshooting.....	16
Accessories.....	18
1-3-25 Warranty.....	19

***Spanish translation begins on page 21.
La traducción en español inicia en la página 21.***

***French Canadian translation begins on page 40.
La traduction en Français débute à la page 40.***



If adjustable base does not operate or if parts are missing, call:

800-888-3078

Do not contact retail store or dealer.

ADVISORY

IMPORTANT INFORMATION

READ THE FOLLOWING INFORMATION CAREFULLY BEFORE USING THIS PRODUCT

WARNING

FOR OPTIMUM ADJUSTABLE BASE OPERATION, USE A GROUNDED, ELECTRICAL SURGE PROTECTION DEVICE (NOT INCLUDED). FAILURE TO USE A SURGE PROTECTION DEVICE COULD COMPROMISE SAFETY OR CAUSE PRODUCT MALFUNCTION.

ELECTRICAL RATING

Electrical components are rated for 110/120 voltage, 60Hz, 100 watt.

ELECTRICAL GROUNDING

This product is equipped with a polarized or grounded electrical power cord. The power cord will only fit into a grounded, electrical surge protection device (not included) or a grounded electrical outlet.

WARRANTY WARNING

Do not open any control boxes, motors or remote control devices. The product warranty will be void if these components are tampered with. Do not attempt to alter component wiring or adjust or modify the structure of the product in any way or the warranty will be void. Any repair or replacement of base parts must be performed by authorized personnel.

LUBRICATION

This product is designed to be maintenance free. The lift motors are permanently lubricated and sealed—no additional lubrication is required. Do not apply lubricant to lift motor lead screws or any nylon nuts or the base may inadvertently creep downward from the elevated position.

PRODUCT RATINGS

The base lift motors are *not* designed for continuous use. Reliable operation and full life expectancy will be realized as long as the lift motor operation does not exceed five (5) minutes over a forty-five (45) minute period, or approximately 11% duty cycle. Any attempt to circumvent or exceed product ratings will shorten the life expectancy of the product and may void the warranty.

The recommended maximum weight (including mattress) for the brío 30 product is 550 lb (249 kg) distributed evenly across the base; the recommended maximum weight (including mattress) for the brío 60 product is 700 lb (317 kg) distributed evenly across the base. This product is not designed to support or lift this amount in the head or foot sections alone.

Note: Exceeding the recommended weight restrictions could damage the base and void the warranty.

For best performance, consumers should enter and exit the adjustable base with the base in the flat (horizontal) position. Avoid placing entire weight on head or foot section of the base, including when in the raised position. **DO NOT STAND ON BASE AT ANY TIME.**

UL (Underwriters Laboratories) recognized components.

CFR 1633 approved for use with most mattresses.

Assembled in USA.

ADVISORY

IMPORTANT INFORMATION

READ THE FOLLOWING INFORMATION CAREFULLY BEFORE USING THIS PRODUCT

SMALL CHILDREN / PETS WARNING

After the base is unboxed, immediately dispose of packaging material as it can smother small children and pets. To avoid injury, children or pets should not be allowed to play under or on the base. Children should not operate this base without adult supervision.

PACEMAKER WARNING

This product produces a vibrating sensation. It is possible that individuals with heart-assist pacemakers may experience a sensation similar to exercise. Consult physician for complete information.

HOSPITAL USE DISCLAIMER

This base is designed for in-home use only. It is not approved for hospital use and does not comply with hospital standards. Do not use this base with tent type oxygen therapy equipment, or use near explosive gases.

SERVICE REQUIREMENTS

Service technicians are not responsible for moving furniture, removing headboards and footboards or any items required to perform maintenance on the base. In the event the technician is unable to perform service due to lack of accessibility, the service call will be billed to the purchaser and the service will have to be rescheduled.

FCC COMPLIANCE

The equipment has been tested and found to comply with the limits for a Class B digital device, pursuant to Part 15 of the FCC Rules. These limits are designed to provide reasonable protection against harmful interference when the equipment is operated in a residential environment. This equipment generates, uses, and can radiate radio frequency energy and, if not installed and used in accordance with the instruction manual, may cause harmful interference to radio communications. However, there is no guarantee that interference will not occur in a particular installation. If this equipment does cause harmful interference to radio or television reception, which can be determined by turning off the equipment off and on, the user is encouraged to try to correct the interference by one or more of the following measures:

- Reorient or relocate the receiving antenna
- Increase the separation between the equipment and receiver.
- Connect the equipment into an outlet on a circuit different from that to which the receiver is connected.
- Consult the dealer or an experienced radio/TV technician for help.

Radio Frequency = 433MHz.

ACOUSTICS

LIFTING/LOWERING MECHANISMS

The lift/lower feature will emit a minimal humming sound during operation. This is normal.

During operation, the lift arm wheels make contact with the platform support of the base. This applies slight tension on the moving components and resonance is reduced to a minimum level. If excessive noise or vibration is experienced, reverse the movement action (up or down) of the base with the remote control. This should realign the base's activating mechanisms to the proper operational position.

MASSAGE OPERATION

The massage feature will emit a minimal tone during operation. This is normal. When the massage level is increased, motor resonance will intensify accordingly.

LOCATION ENVIRONMENT

The level of sound experienced during operation is directly related to the location environment. For example, when a base is located on a hardwood floor with the massage feature in operation, a vibrating tone will be audible. To minimize this resonance, place a piece of carpet, or rubber caster cups, under each leg or caster of the base.

It is possible to experience vibration or noise from headboard brackets, headboards or footboards (if used) if mounting bolts are not firmly tightened.

INSTALLATION

For installation and setup, complete the following procedures, in the order indicated below and on the following pages:

STEP 1

Before discarding any packing materials, open the adjustable base shipping carton and verify the following items are included:

- (1) Mattress Retainer
- (4) Bed Legs (4" leg comes standard with brío™ 60 products; 7" leg comes standard with brío™ 30 products)
- (4) Locking Leg Casters (standard with 4" legs only)
- (1) Remote Control (varies according to base type)
- (1) Owners Manual
- (1) Warranty Sheet
- (1) Warranty Activation Card
- (1) Quick Setup Guide



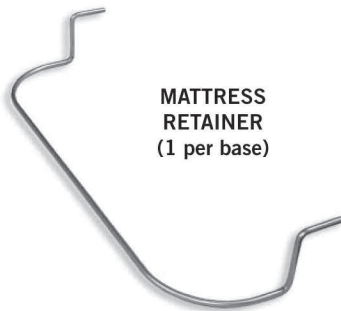
OWNERS MANUAL



WARRANTY



WARRANTY
ACTIVATION CARD



MATTRESS
RETAINER
(1 per base)



LOCKING LEG CASTER -
Standard with brío™ 60
products
(4 pieces)



QUICK SETUP GUIDE



4" LEG - Standard with
brío™ 60 products
(4 pieces)



7" LEG - Standard with
brío™ 30 products
(4 pieces)



REMOTE CONTROL
(varies according to base type)

INSTALLATION

STEP 2

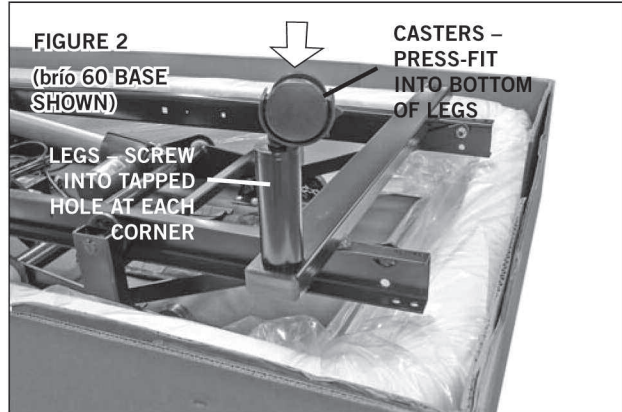
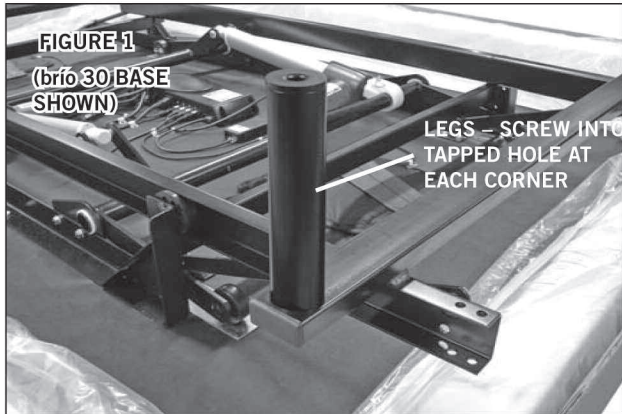
Carefully lift the adjustable base frame from the shipping carton, keeping the unit top-side-down.

STEP 3

Install (4) legs into the base frame. Simply screw each leg into a tapped hole at each corner of the base frame (**FIGURES 1 and 2**). Insert caster into leg, if applicable.

!WARNING

AT LEAST TWO PEOPLE ARE RECOMMENDED FOR HANDLING AND MOVING ADJUSTABLE BASE.



STEP 4

Remove and extend out power cord from the protective packaging.

!WARNING

POWER CORDS MUST NOT INTERFERE WITH ANY ADJUSTABLE BASE MECHANISMS.

STEP 5

Remove the plastic packaging from the adjustable base frame. Carefully rotate the base frame over to position the base top-side-up.

INSTALLATION

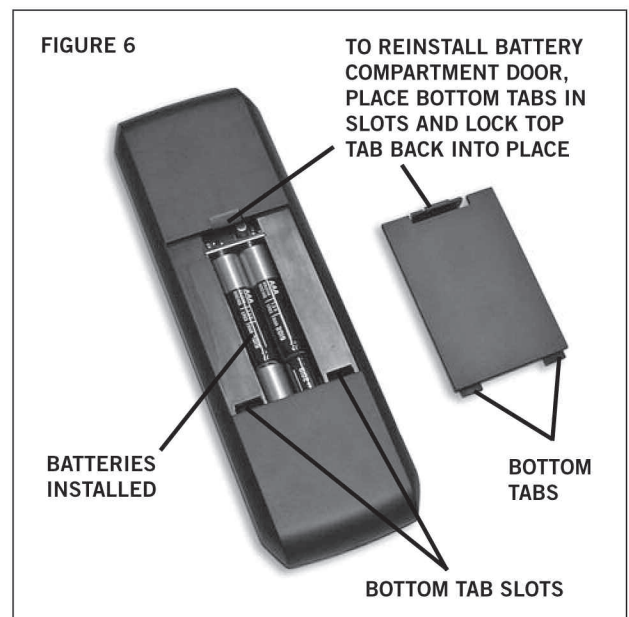
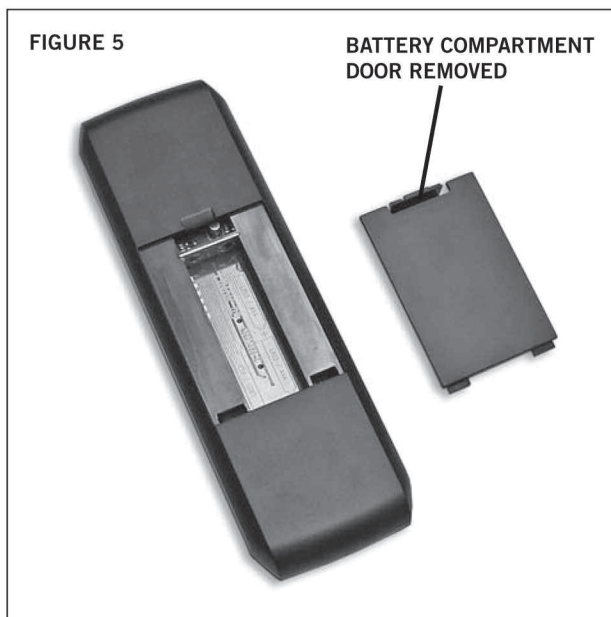
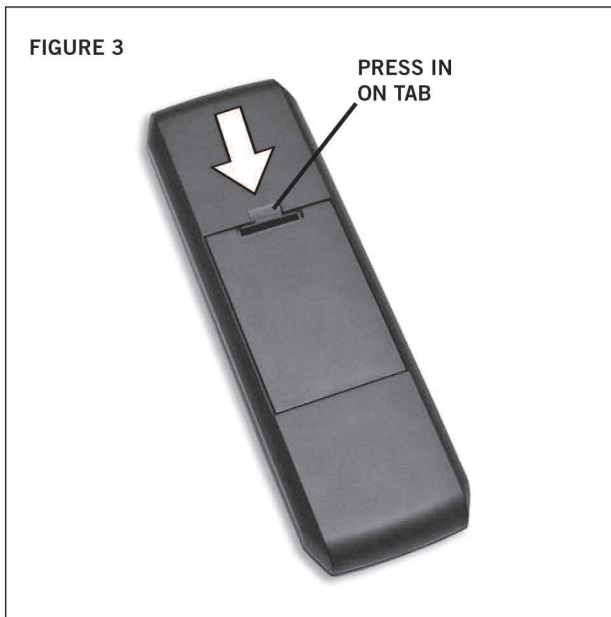
STEP 6

Plug electrical power cord into a working, grounded electrical outlet.

Note: An electrical surge protection device is recommended (not included).

STEP 7

If remote control is non-wired type, install batteries in remote control (wired remote controls do not require batteries) (FIGURES 3 thru 6). Briefly activate all functions of the base with the remote control to verify all features are in working order. If base does not operate, refer to the *Troubleshooting* section of this manual.



INSTALLATION

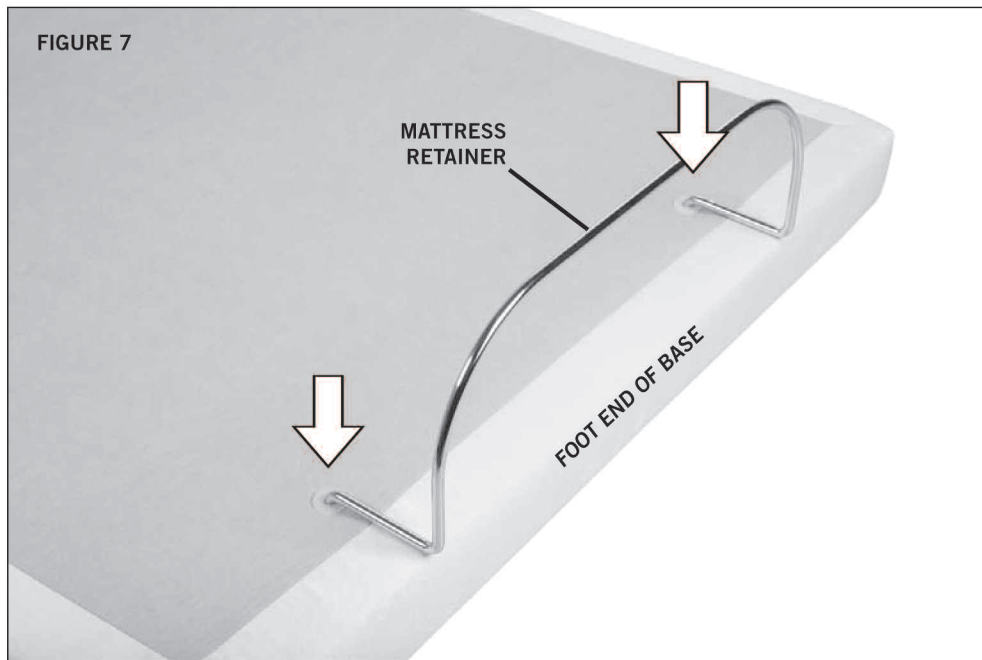
STEP 8

Return base to the level position.

STEP 9

Install mattress retainer at the foot end of the base as follows:

- a. Locate grommets at foot of base (**FIGURE 7**).
- b. Place mattress retainer ends into grommets in top surface of adjustable base (**FIGURE 7**). Press down until horizontal retainer section is flush against base.

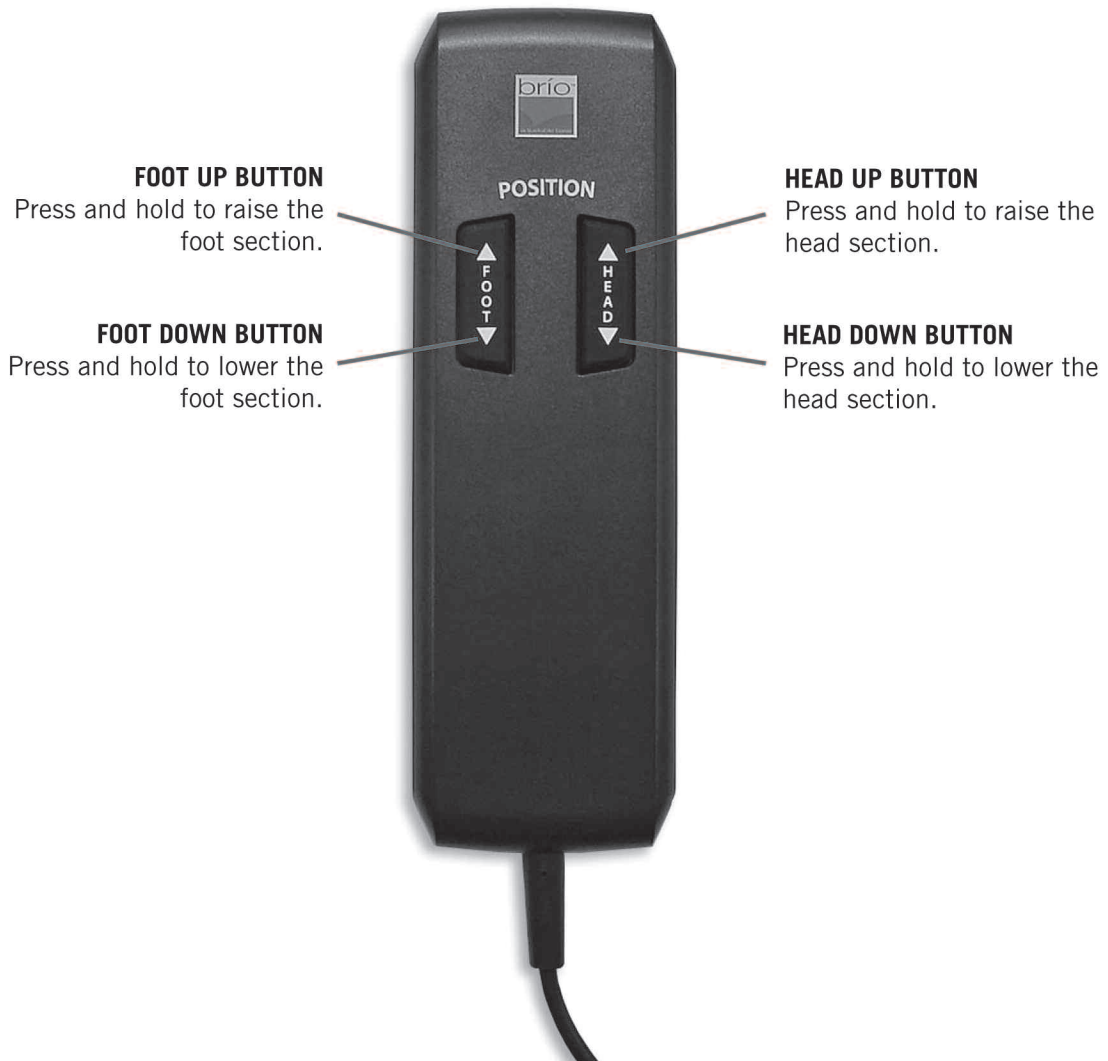


STEP 10

Install mattress on adjustable base.

Typical brío™ adjustable base installation is now complete.

brío 30 REMOTE CONTROL FUNCTION



brío 60 REMOTE CONTROL FUNCTION

TRANSMISSION INDICATOR LIGHT

Verifies a button is being pressed and data is being sent to the base.

FOOT MESSAGE UP BUTTON

Press to turn the foot massager on at low intensity. Pressing the button again will increase the level of intensity. There are 3 levels of intensity. The massager will automatically turn off after 30 minutes.

FOOT MESSAGE DOWN BUTTON

Press to decrease the foot massager intensity. To turn off, press until massager stops.

FOOT UP BUTTON

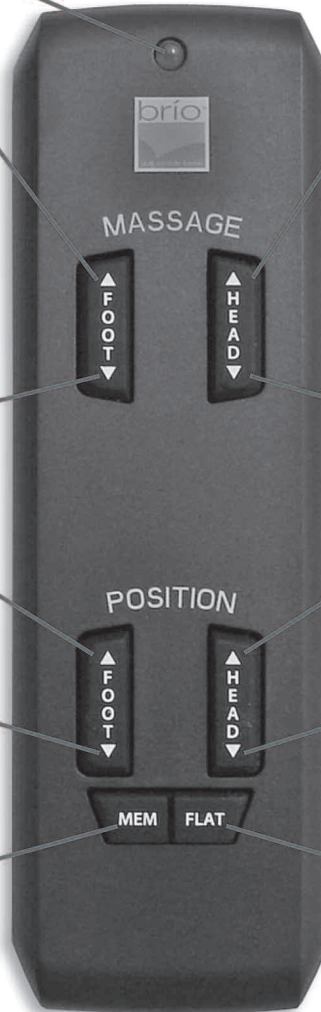
Press and hold to raise the foot section.

FOOT DOWN BUTTON

Press and hold to lower the foot section.

MEMORY BUTTON

Once the desired position or massage function has been achieved, press and hold the *memory button* for 5 seconds to record the position in the memory. After the position has been saved, press the *memory button* to return the base to this position from any other position.



HEAD MESSAGE UP BUTTON

Press to turn the head massager on at low intensity. Pressing the button again will increase the level of intensity. There are 3 levels of intensity. The massager will automatically turn off after 30 minutes.

HEAD MESSAGE DOWN BUTTON

Press to decrease the head massager intensity. To turn off, press until massager stops.

HEAD UP BUTTON

Press and hold to raise the head section.

HEAD DOWN BUTTON

Press and hold to lower the head section.

FLAT BUTTON

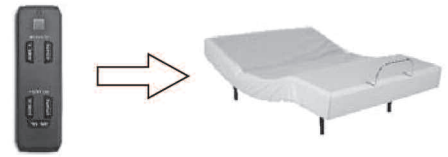
Press to adjust the base to the flat position.

NOTE

REMOTE CONTROL REQUIRES FOUR (4) AAA SIZE BATTERIES. TO CONSERVE BATTERY LIFE, THE TRANSMITTER TURNS OFF ALL FUNCTIONS WHEN ANY BUTTON IS PRESSED FOR MORE THAN 50 SECONDS.

brío 60 REMOTE CONTROL PROGRAMMING (1 remote control - 1 base)

Program One Remote to Operate One Base - perform the following numbered procedure. *If programming fails, initiate the programming procedure a second time.* **Note: More than one person may be required for programming procedure.**



STEP 1

Plug the base into the electrical power source.

STEP 2

Carefully secure base on its side. **WARNING: AT LEAST TWO PEOPLE ARE RECOMMENDED FOR HANDLING AND MOVING ADJUSTABLE BASE.**

STEP 3

Locate the control box, attached to the underside of the base (**FIGURE 8**).

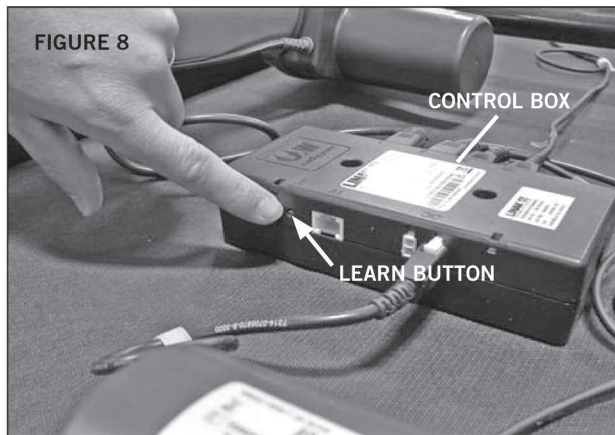


FIGURE 9

STEP 4

Press and hold the *learn button* on the control box (**FIGURE 8**).

STEP 5

While holding the *learn button*, press and hold the *foot up button* on the remote control for 5 seconds (**FIGURE 9**), then release both the *learn button* and the *foot up button*.

STEP 6

Carefully place base so it is resting on its legs.

STEP 7

Press either the *head* or *foot button* on the remote control to verify base functions.

One remote control is now programmed to operate one base.

brío 60 REMOTE CONTROL PROGRAMMING (1 remote control - 2 bases)

Program One Remote to Operate Two Bases - perform the following numbered procedure. *If programming fails, initiate the programming procedure a second time.* **Note: More than one person may be required for programming procedure.**

STEP 1

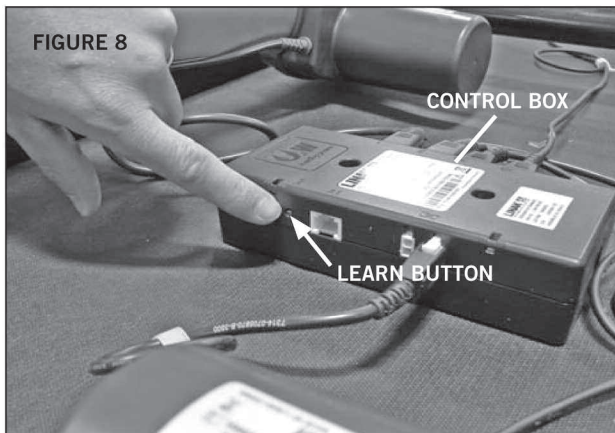
Plug base 1 into the electrical power source.

STEP 2

Carefully secure base on its side. **WARNING: AT LEAST TWO PEOPLE ARE RECOMMENDED FOR HANDLING AND MOVING ADJUSTABLE BASE.**

STEP 3

Locate the control box, attached to the underside of the base (FIGURE 8).



STEP 4

Press and hold the *learn button* on the control box (FIGURE 8).

STEP 5

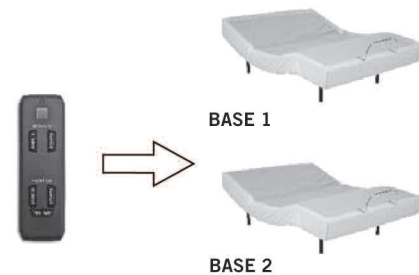
While holding the *learn button*, press and hold the *foot up button* on the remote control for 5 seconds (FIGURE 9), then release both the *learn button* and the *foot up button*.

STEP 6

Carefully place base so it is resting on its legs.

STEP 7

Press either the *head* or *foot button* on the remote control to verify base functions.



STEP 8

Repeat procedure with base 2.

One remote control is now programmed to operate two bases.



FIGURE 9

brío 60 REMOTE CONTROL PROGRAMMING (2 remote controls - 1 base)

Program Two Remotes to Operate One Base - perform the following numbered procedure. *If programming fails, initiate the programming procedure a second time.* **Note: More than one person may be required for programming procedure.**

STEP 1

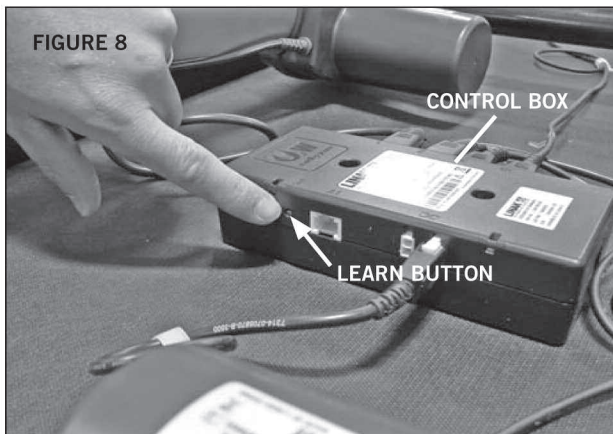
Plug the base into the electrical power source.

STEP 2

Carefully secure base on its side. **WARNING: AT LEAST TWO PEOPLE ARE RECOMMENDED FOR HANDLING AND MOVING ADJUSTABLE BASE.**

STEP 3

Locate both remote controls and the control box, attached to the underside of the base (**FIGURE 8**). Hold the remote controls close to the control box.



STEP 4

Press and hold the *learn button* on the control box AND the *foot up button* on remote control 1 (**FIGURES 8 and 9**).

Continue holding both buttons for 3 seconds, then, after those 3 seconds, press the *foot up button* on remote control 2 and continue holding all three buttons for 5 more seconds.

Release the *learn button*, then release the *foot up buttons* on both remote controls.



STEP 5

Press either the *head* or *foot button* on the remote control to verify base functions.

Both remote controls should now operate one base.



FIGURE 9

brío 60 REMOTE CONTROL PROGRAMMING (2 remote controls - 2 bases)

Program Two Remotes to Operate Two Bases - perform the following numbered procedure. *If programming fails, initiate the programming procedure a second time.* **Note: More than one person may be required for programming procedure.**

STEP 1

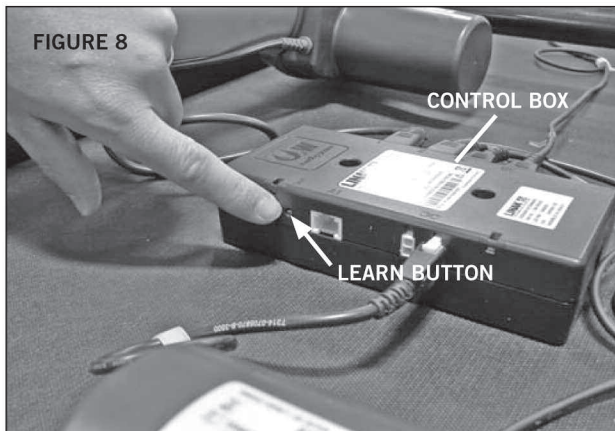
Plug both bases into the electrical power source.

STEP 2

Carefully secure both bases on their sides next to each other. **WARNING: AT LEAST TWO PEOPLE ARE RECOMMENDED FOR HANDLING AND MOVING ADJUSTABLE BASE.**

STEP 3

Locate both remote controls and the control boxes, attached to the underside of each base (FIGURE 8). Hold the remote controls close to the control boxes.

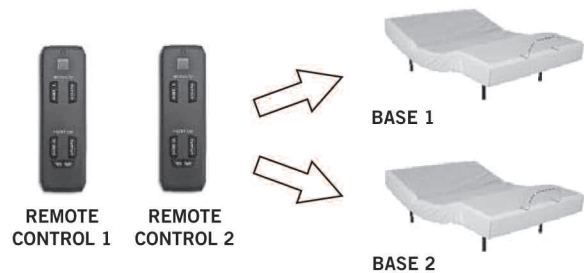


STEP 4

Simultaneously press and hold the *learn button* on both control boxes AND the *foot up button* on remote control 1 for 3 seconds (FIGURES 8 and 9).

Continue holding both buttons for 3 seconds, then, after those 3 seconds, press the *foot up button* on remote control 2 and continue holding all three buttons for 5 more seconds.

Release the *learn button* on both control boxes, then release the *foot up buttons* on both remote controls.



STEP 5

Press either the *head* or *foot button* on each remote control to verify base functions.

Both remote controls should now operate two bases.



FIGURE 9

TROUBLESHOOTING (wireless base)

In the event the adjustable base fails to operate, investigate the symptoms and possible solutions provided in the chart below:

SYMPTOM	SOLUTION
No features of the base will activate.	<ul style="list-style-type: none"> • Program the remote control (see <i>Remote Control Programming</i> section of this manual for programming procedures). • Unplug power cord, wait 30 seconds and plug in to reset electronic components. • Electrical circuit breaker may be tripped. Check electrical service breaker box to verify. • Defective surge protection device or electrical outlet. Test outlet by plugging in another working appliance.
Head or foot section will elevate, but will not return to the horizontal (flat) position.	<ul style="list-style-type: none"> • Base mechanism may be obstructed. Elevate base and check for obstruction. Remove obstruction. • Head section may be too close to the wall. • Headboard may be too close the edge of the mattress. Verify a 1.5" (38.1mm) to 2" (50.8mm) distance between headboard brackets and mattress. Adjust if required.
Excessive massage motor noise.	<ul style="list-style-type: none"> • Verify headboard brackets were removed during installation. Remove headboard brackets if still attached to the underneath side of base. • If base is located on hard surface flooring, place carpet pieces or rubber caster cups under each leg or caster of the base. (See <i>Accessories</i> section of this manual for rubber caster cup order information.) • Elevate the head or foot section a short distance (with the remote control) to realign the lift/lower mechanisms with the base support platform. • Verify that base is not positioned against a wall, nightstand, or other object that may cause vibration or noise. • If base is installed over a base frame, verify massage motors are not causing base frame (or base frame components) to vibrate. • Verify that headboard attachment hardware is tightened firmly (if used).

TROUBLESHOOTING (wired base)








In the event the adjustable base fails to operate, investigate the symptoms and possible solutions provided in the chart below. For additional assistance call 800-888-3078.

SYMPTOM	SOLUTION
Remote control will not activate base.	<ul style="list-style-type: none"> • Verify power cord is plugged into a working, grounded electrical outlet. <i>A grounded, electrical surge protection device is recommended.</i> Test outlet by plugging in another working appliance. • Verify remote control is plugged into the motor. • Unplug power cord, wait 30 seconds and plug in to reset electronic components. • Electrical circuit breaker may be tripped. Check electrical service breaker box to verify. • Defective surge protection device or electrical outlet. Test outlet by plugging in another working appliance.
Head or foot section will elevate, but will not return to the horizontal (flat) position.	<ul style="list-style-type: none"> • Base mechanism may be obstructed. Elevate base and check for obstruction. Remove obstruction. • Head section may be too close to the wall. • Headboard may be too close the edge of the mattress. Verify a 1.5" (38.1mm) to 2" (50.8mm) distance between headboard brackets and mattress. Adjust if required.

ACCESSORIES

brío™ OPTIONAL EQUIPMENT

Contact customer service toll free (800-888-3078) to order the accessories indicated in the chart below.

ACCESSORY DESCRIPTION	CODE	IMAGE
Wired Remote Control Cable - Dual DC Motor	4B5431	
Head Board Brackets-TXL	4B6117	
Head Board Brackets-FXL/Q	4B6118	
Push-in Locking Casters (set of 4)	4B1806	
Bed Link Kit (connects two bases together)	4B7410	
Rubber Caster Cups (set of 4)	4B1034	
Leg Extension Kit	4B7365	

1 YEAR, 3 YEAR AND 25 YEAR LIMITED WARRANTY

In this warranty: “**Adjustable base**” means the adjustable bed foundation sold by L&P to the dealer. The “adjustable base” does not include the mattress. “**L&P**” means Leggett & Platt, Incorporated. “**Purchaser**” and “**You**” both mean the consumer who is the original purchaser of this adjustable base made by L&P. This warranty is not transferrable. “**Warranty Commencement Date**” means either (i) the date You purchased a new and unused L&P adjustable base or (ii) the date of manufacture of this adjustable base if You purchased an L&P adjustable base that has been used as floor or display model. L&P warrants this adjustable base to You on the terms and over the reducing periods of time set out below. All warranty claims require notice from You to be given to L&P in the manner set out below, and to be received by L&P inside the applicable warranty time period.

1ST YEAR FULL WARRANTY

For the first year from the Warranty Commencement Date, your adjustable base is warranted against non-excluded defects in L&P’s workmanship or materials. During the first year from the Warranty Commencement Date, L&P will repair or replace (at no cost to You) any defective adjustable base part, and L&P will pay all authorized labor and transportation costs associated with the repair or replacement of any parts found to be defective.

2ND & 3RD YEAR LIMITED WARRANTY

During the second and third year from the Warranty Commencement Date, L&P will replace any adjustable base part found to be defective and not excluded by this warranty. You are responsible to pay all service and transportation costs related to the costs of receiving and installation of the new part.

4TH YEAR TO END OF 25TH YEAR LIMITED WARRANTY

Starting in the fourth year from the Warranty Commencement Date and through to the end of the 25th year from the Warranty Commencement Date, L&P will replace steel and mechanical base parts found to be defective and not excluded by this warranty. **This warranty does not cover any electronics, electrical components, drive motors or massage motors.** You are responsible to pay all service and transportation costs related to receiving and installation of the new part and a portion of the cost of the replacement steel and mechanical part, based on the number of months that the base has been owned by you since the fourth anniversary of the Warranty Commencement Date. By the end of the 25th year, no portion of the replacement cost is covered by L&P. You will be required to pay 1/22nd of the then current replacement cost of the part multiplied by the number of years past the third year from the Warranty Commencement Date. This portion is calculated using the following formula: Cost of the part divided by 22 [being the number of years in years 4 to 25 inclusive], multiplied by the number of years you have owned the base since the end of the first 3 years. For example, if you make a claim for a part eligible for this warranty in the 5th year since the Warranty Commencement Date, you would be responsible for paying: \$100 part cost divided by 22, multiplied by 2 = \$9.09.

ADDITIONAL TERMS AND CONDITIONS

This warranty requires notice to be given to L&P of any claim for repairs or replacement parts.

EXCLUSIONS:

This warranty does not apply; (a) to any damage caused by You; (b) if there has been any repair or replacement of adjustable base parts by an unauthorized person; (c) if the adjustable base has been mishandled (whether in transit or by other means), subjected to physical or electrical abuse or misuse, or otherwise operated in any manner inconsistent with the operation and maintenance procedures outlined in the Owner’s Manual and this warranty; (d) to damage to mattresses, fabric, cables, electrical cords or items supplied by dealers (contact the dealer for warranty information on these items); (e) if there has been any modification of the adjustable base **without prior written consent by L&P**; or (f) to costs for unnecessary service calls, including costs for in-home service calls solely for the purpose of educating You about the adjustable base or finding a satisfactory power connection.

This warranty will be void if either the recommended weight restriction is not followed (refer to the advisory section of the Owner’s Manual) or if You sell or give or transfer the base to another person.

Any repairs to or replacement to Your adjustable base or its components under the terms of this limited warranty does not extend the applicable warranty from the Warranty Commencement Date. This time limitation may not apply in some jurisdictions, including the Province of Quebec.

The decision to repair or to replace defective parts under this warranty shall be made, or cause to be made, by L&P at its option and in its sole discretion.

Continued on next page...

1 YEAR, 3 YEAR AND 25 YEAR LIMITED WARRANTY

Repair or replacement shall be the sole remedy of the Purchaser. There shall be no liability on the part of L&P for any special, indirect, incidental, or consequential damages or for any other damage, claim, or loss not expressly covered by the terms of this warranty.

This limited warranty does not include reimbursement for inconvenience, removal, installation, setup time, loss of use, shipping, or any other costs or expenses. L&P and its service technicians will not be responsible for moving furniture or any other items not attached to the adjustable base in order to perform service on the adjustable base.

It is the sole responsibility of You to provide adequate space and accessibility to the adjustable base. In the event that the technician is unable to perform service due to lack of accessibility, the service call will be billed to You and the service will have to be rescheduled.

L&P makes no other warranty whatever, express or implied, and all implied warranties of merchantability and fitness for a particular purpose are disclaimed by L&P and excluded from this agreement.

Some American States do not allow the exclusion or limitation of incidental or consequential damages, so the above limitation or exclusion may not apply to You.

This warranty gives You specific legal rights, and You may also have other rights, which may vary from jurisdiction to jurisdiction. This warranty is valid in all 50 American States, the District of Columbia, Puerto Rico, and all 10 Provinces and 3 Territories of Canada.

For customer service under this limited warranty, give notice to L&P by mail, phone, email or online to the addresses set out below:

Leggett & Platt, Incorporated
PO Box 668
Lexington, North Carolina 27293

toll free phone: 1.800.888.3078
online: lpadjustablebases.com
email: accustomerservice@leggett.com

For French Canadian Customer Service, call 1.877.452.2665

**PLEASE DO NOT CONTACT YOUR RETAIL DEALER
OR ANY OTHER SERVICE PERSONNEL**